



# USER MANUAL

## TABLE OF CONTENTS

Introduction .....	2
Trailer Features .....	2
Equestrian Trailer Accessories .....	3
Merchandise Trailer Accessories .....	8
Trailer Specifications .....	10
Before Transporting Trailer .....	11
After Transporting Trailer .....	16
Storage .....	17
Troubleshooting .....	17
Maintenance .....	19

## INTRODUCTION

Thank you for purchasing an Alumi Tech Trailer. This document will guide you through the features, setup, and use of our product. Our aim is to ensure you have the best user experience possible.

## TRAILER FEATURES

Due to the custom nature of our products, not all features included below will apply to your specific trailer design. If you have any questions as to what specific features are included in your model, do not hesitate to contact us at **574-598-2037**.

## ELECTRICAL/POWER

### ON-BOARD GENERATOR

All models with on-board generators come preinstalled with an automatic power transfer switch. This allows the user to switch between external shore power and on-board generator power without risk of improper electrical setup. The power transfer switch automatically switches between these sources depending on which source is used. Additional portable generators must be manually converted to shore power via the shore plug if your trailer does not come preinstalled with a generator.

**NOTE:** When switching power sources, it is best to turn off both sources first. Then, change sources and wait up to 10 seconds to allow the unit to respond.

Additionally, ensure that proper airflow is supplied to the generator during operation. To create a crossflow, 1) open compartment door(s) or 2) open compartment door and use the provided tray to slide the generator out of the compartment. Use the provided finger latches to extend and retract the slides.



**NOTE:** Many generators are equipped with carbon monoxide sensors that will automatically shut down the generator if the unit does not receive sufficient airflow. Ensure sufficient venting.

### 30/50 AMP POWER CONVERTER

The power converter receives an AC voltage and directs it to all the necessary appliances of the trailer (i.e. outlets, air conditioner, battery charger, etc.) as well as powers all DC components (USB charging ports, interior lights, thermostat, etc.).

### SOLAR BATTERY CHARGER

All trailers fitted with solar panels passively charge the on-board battery. Additionally, trailer batteries are charged when the trailer is connected to the tow vehicle via the 7-way cable.

For additional information regarding the generator, power converter, and/or solar battery charger, please refer to the appropriate OEM manual.

### LEVELING JACKS

Some trailers feature leveling jacks for increased comfort during use. Although these jacks are rated for a certain weight, they are for leveling purposes only. Do not use these jacks to raise the trailer for maintenance or tire changes.

A hand crank and an electric drill adapter are included to raise and lower the jacks.

### MOUNTING SYSTEM

Some trailers include mounting track on the exterior and/or interior of the trailer. This mounting track is compatible with airline and L-track accessories. Additional accessories may be purchased from a third-party supplier.



## EQUESTRIAN TRAILER ACCESSORIES

### INTERIOR LIGHTING

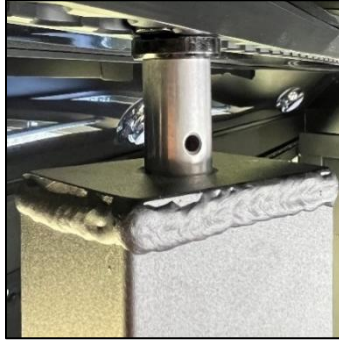
Interior lights for your equestrian trailer are operated using the small button switch on the back street side exterior of the trailer. There is no need to open the trailer to operate the interior lights. The tack room has its own separate interior light switch.

### ADJUSTABLE HORSE PARTITIONS



Your horse trailer has been fitted with easily adjustable stall partitions. A 9/16" wrench will be needed to adjust partition hinges and strike plate. Complete the following procedure when adjusting partition location:

1. **Unlatch stall partition** – Unlatch the partition from the strike plate and open fully before removing it from its hinge.
2. **Remove stall partition pin** – Each partition has a removable pin at the top. Remove this pin before adjusting its location.



3. **Remove stall partition from hinge** – Lift partition and tilt it on its hinge to remove from lower hinge piece. Lower the stall partition to remove it from the upper hinge piece. Set the partition aside.



4. **Adjust hinge location** – The hinge pieces can be loosened using the 9/16" wrench and removed from the mounting track and reinserted in the desired location.





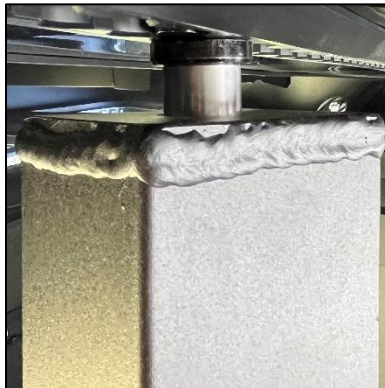
**NOTE:** The screws securing the mounting track to the floor or ceiling are prealigned. Use these fasteners as a reference to properly align the hinge perfectly upright. The upper hinge piece must be fastened directly above the lower hinge piece. Ensure both hinge pieces are fully tightened and properly fastened.



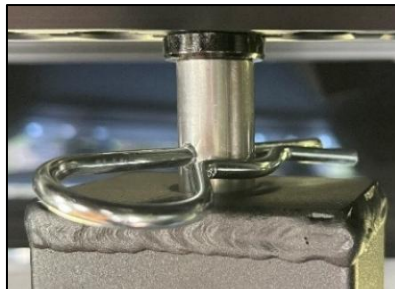
### **Warning**

Neglecting to fully tighten and/or properly fasten hinge pieces could result in partition failure when loaded and/or during transport.

5. **Reinstall stall partition** – Reinstall the partition by raising it up through the top hinge piece and then lowering it onto the lower hinge piece. Use two people if necessary.



6. **Reinsert stall partition pin** – Replace the partition pin to ensure that the partition stays in place during transport and while trailer is loaded.



### **Warning**

Neglecting to reinsert the pin before loading or transporting the trailer could cause the stall partitions to disconnect from their hinges, causing potential damage to both the trailer and equipment/animals.

7. **Adjust strike plate/latch location** – Loosen strike plate on its mounting track by removing the 9/16” nut using the wrench. Pull strike plate away from the track slightly and then slide strike plate freely until you can insert the bolt of the stall partition into the latch. Secure strike plate in place by replacing and tightening the nut. Additionally, you may slide the strike plate the same number of locations as you moved the partition hinge pieces.



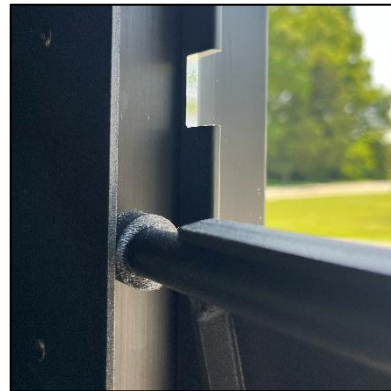
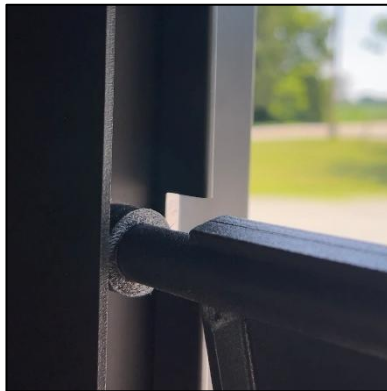
### Warning

**An improperly fastened and/or fitted strike plate could result in partitions becoming unlatched while trailer is loaded and/or during transport, causing potential bodily harm to animals and people.**

**NOTE:** The strike plate is to be adjusted after determining and adjusting the stall partition location. The strike plate should be fastened as far forward as possible while still being able to fully latch the partition. This ensures that the partitions remain closed during transport of horses/cargo. Inspect strike plate after installation to verify that it lies flat against the mounting track.

## DROP-DOWN WINDOWS

Some equestrian trailers feature drop-down windows. To lock screens closed, lift the windows approximately 20 degrees from their fully open position and insert the pins on the top edges of the screen into the slot.



Screens must be locked in the slot for the windows to shut and latch. Screens may be opened when trailer is parked.

There are two configurations of windows that are safe when towing the trailer:

1. **Windows and screens closed and locked** – The screens must be in the locked position for the window to latch shut. It is recommended that the window latch be locked shut to ensure that windows are properly latched.



2. **Windows open and latched, screens closed and locked** – With the screens in the locked position, the windows can be latched open as shown.



### Warning

Neglecting to tow vehicle in either of the configurations listed above could result in damage to property or trailer and bodily harm to horses or pedestrians.



## MERCHANDISE TRAILER ACCESSORIES

### ROOF MARQUEE

Some merchandise trailers are equipped with a roof marquee. To display the sign, complete the following:

1. **Unlatch the pin** – First, begin to pull back the pin to compress the spring. Then, rotate the pin so that the dowel pin can pass through the vertical bars. Continue pulling the pin until the dowel clears the bars and then lock it in position by rotating the pin back to engage the dowel with the vertical bars.



2. **Raise the marquee** – You may now lift the marquee. The hydraulic cylinder supports the sign in the upright position.



#### **Warning**

Transporting the trailer with the marquee open could potentially cause damage to the trailer or others. Ensure that the marquee is properly stowed and latched prior to transporting the trailer.

To store the sign and for transport, lower the sign and reengage the pin.

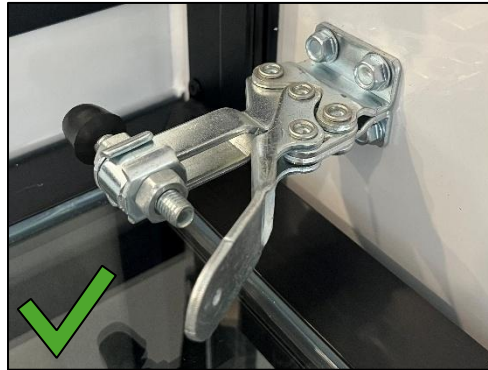
### MERCHANDISE WINDOW





Follow these steps when opening the merchandise window:

1. **Unlatch the window** – Each merchandise window includes two interior latches on either side of the window. Before opening the window, ensure that the latches are completely open. To open the latches, pull handle toward you.



2. **Push open the window** – Gently push the window out from the inside toward the middle of the window. The hydraulic cylinders automatically lift the window open. Be sure to inspect exterior surroundings before opening the window.

To close the merchandise window:

1. **Compress the slide locks** – Before attempting to close the window, locate the red slide locks. These must be compressed to begin closing the window. These locks hold the door open in case of wind. Use caution when raising and lowering merchandise window. If handled improperly, struts can become disconnected from the window.



**NOTE:** If two people are not present to close the merchandise window, one of the slide locks may be temporarily adjusted to allow a single person to close the window. To disengage one of the slide locks, grip the black cylinder connected to the red slide lock and rotate the slide lock until the strut can retract freely. Ensure that the slide locks are reengaged before next use.

2. **Close the window**
3. **Reengage window latches** – If finding it difficult to latch window shut, utilize pull rings located on interior of merchandise window to increase leverage.

## TRAILER SPECIFICATIONS

### BUMPER-PULL

1. **Height adjustability** - This bumper-pull trailer is equipped with a channel-style hitch coupler. This allows for high adjustability for the hitch height. This is necessary to properly load the trailer for the towing vehicle.

To adjust the height of the coupler, remove the nuts from both bolts. Next, remove the bolts while supporting the coupler. Simply choose a new height for the coupler ensuring that both bolts are then threaded through both the coupler and the channel and that the nuts are replaced and tightened.



**NOTE:** Slight play in the bumper-pull hitch system is expected. Even when the height adjustment bolts are tightened, expect the coupler to exhibit some looseness.

2. **Electric Trailer Jack** – Your trailer is also equipped with an electric jack. This is used to support and level the trailer when it is detached from the towing vehicle. First, turn the jack on by flipping the appropriate switch on the front panel. The second switch located on the front plate of the jack raises and lowers the jack. Please note that the electric jack may require that the 7-way power cable be plugged into the tow vehicle for operation.
3. **Safety Chains** – The set of 2 chains attached to the front of the trailer are designed to minimize the damage caused by the trailer to the tow vehicle and the surrounding environment in case the trailer disconnects from the tow vehicle during transport. These chains should be crossed and then attached to their respective connection points on the tow vehicle.
4. **Break-Away Cable** – The break-away cable, or safety cable, is also for use in case the trailer disconnects from the hitch. If the cable is triggered, the trailer brakes will engage, slowing down the trailer.
5. **7-Way Cable** – The 7-way cable is the power source to the trailer from the tow vehicle. This cable is also necessary to operate the DOT trailer lights during transport.

### GOOSENECK

1. **Height adjustability** – This gooseneck style trailer is equipped with a gooseneck coupler. This allows for high adjustability for the hitch height. This is necessary to properly load the trailer for the towing vehicle.

To adjust the height of the coupler, remove the set bolts. Next, remove the pin from the coupler while supporting the coupler. Simply choose a new height for the coupler using the pin. Lastly, tighten the set bolts so that there is no play in the coupler.



2. **Hydraulic Trailer Jack** – Your trailer is also equipped with a hydraulic jack. This is used to support and level the trailer when it is detached from the towing vehicle. The remote located underneath the neck of the trailer raises and lowers the jack. Please note that the hydraulic jack may require that the 7-way power cable be plugged into the tow vehicle for operation.
3. **Safety Chains** – The set of 2 chains attached to the front of the trailer are designed to minimize the damage caused by the trailer to the tow vehicle and the surrounding environment in case the trailer disconnects from the tow vehicle during transport. These chains should be attached to their respective connection points on the tow vehicle.
4. **Break-Away Cable** – The break-away cable, or safety cable, is also for use in case the trailer disconnects from the hitch. If the cable is triggered, the trailer brakes will engage, slowing down the trailer.
5. **7-Way Cable** – The 7-way cable is the power source to the trailer from the tow vehicle. This cable is also necessary to operate the DOT trailer lights during transport.

## BEFORE TRANSPORTING TRAILER

Regardless of your trailer model, it is essential to verify that your tow vehicle is appropriate to tow your trailer. The weight ratings of your tow vehicle should be located within the driver side door frame of your vehicle. Reference the weight ratings located on the front of your trailer to ensure that it is not overloaded. You may need to employ a truck scale or weighbridge to weigh your vehicle and trailer to verify that your system is appropriate.

## BUMPER-PULL

### PREPARING TRAILER FOR HOOKUP

1. **Level the trailer** - Your trailer should be on level ground before attempting to connect the coupler to the hitch of the towing vehicle. Consider connecting the trailer to the tow vehicle on a level road or driveway.
2. **Install wheel chocks** – To prevent the trailer from rolling backward when the jack is removed, install wheel chocks in pairs on either side of the trailer wheels. Apply chocks to both the front and rear of at least two trailer tires.
3. **Unlock coupler** – Verify that the coupler of the trailer is in the unlocked, **forward** position.



### CONNECTING TRAILER TO TOW VEHICLE

4. **Back up tow vehicle** – Reverse the tow vehicle, placing the trailer ball directly below the trailer coupler. To do this, you may need to raise the coupler with the electric jack.
5. **Plug in 7-way cable** – Connect the 7-way plug into the respective port of the tow vehicle.



6. **Retract the jack** – Raise the jack, lowering the trailer coupler onto the trailer ball of the tow vehicle.



### Warning

The jack should always be fully retracted to its maximum height before pulling the trailer. Neglecting to do this can result in damage to the jack, trailer, and tow vehicle and can cause serious injury.

7. **Apply appropriate tongue weight** - An indicator that your trailer tongue weight is appropriate is that the trailer is level when connected to the tow vehicle. Use a bubble level to validate this, ensuring that the trailer and tow vehicle are on level ground. If the trailer does not sit level, adjust the height of the hitch coupler within the channel.



### Warning

#### Dangers of tongue weight underloading/overloading

There are inherent risks to both underloading and overloading the tongue of your trailer.

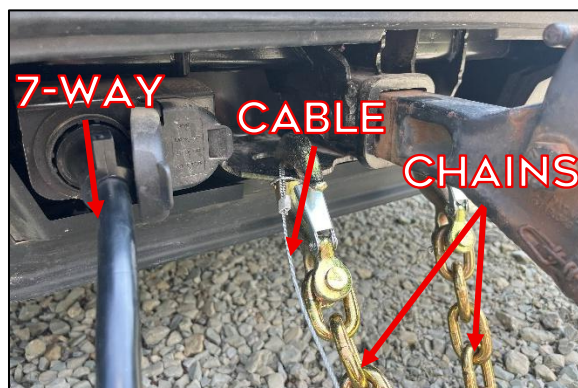
An overloaded tongue can reduce traction and steering ability of front tires of the towing vehicle.

An underloaded tongue has been shown to increase swaying/fishtailing of the trailer during transport, especially with increased speeds or heavy wind.

8. **Lock the coupler** – Slide the coupler latch **away** from the ball until it engages. Thread the safety pin through the hole to ensure the latch is fully engaged.



9. **Attach the safety chains** – Cross the safety chains and attach them from the trailer tongue to the connection points on the tow vehicle. There should be approximately 5 inches of clearance between the crossed chains and the road.







## Warning

### Dangers of Twisting Safety Chains

Although twisting chains for trailer hookup may seem like an effective way to adjust their length, this has been proven to greatly reduce the strength of the chains. Instead, the pins that attach the chains to the hooks can be removed and inserted through a different link to change the length of chain without twisting or cutting the chain. Ensure that both chains are approximately the same length when adjusting their length.

10. **Attach the break-away cable** – Ensure that the break-away cable is attached to the tow vehicle frame and is engaged/connected on the trailer. Verify that the break-away cable is not threaded through or around anything on the trailer tongue. The break-away cable should be a few inches shorter than the chains when the chains are pulled taught to ensure proper deployment of trailer brakes in case of emergency.
11. **Remove wheel chocks** – Remove wheel chocks from trailer wheels before inspecting the trailer.
12. **Test lights** – Check to ensure full functionality of running/marker lights, tail/brake lights, and turn signals.
13. **Test brakes** – Ensure brakes on tow vehicle and trailer are fully operational.
14. **Inspect tires** – Make sure tires of both the tow vehicle and trailer are properly inflated and that lug nuts are properly tightened.
15. **Inspect trailer bed** – Verify that there are no loose or frayed wires underneath the trailer. Address any safety concerns before towing the trailer.
16. **Close and lock windows and doors** – Make sure all doors, windows, and any other items (marquee, merchandise window, hay pod) are shut and locked/latched. Locking doors are recommended to ensure that doors are completely closed and latched.



## Warning

Neglecting to close and lock down all doors, windows, and other compartments could result in damage to the trailer and tow vehicle as well as cause bodily harm to pedestrians.

## GOOSENECK

### PREPARING TRAILER FOR HOOKUP

1. **Level the trailer** - Your trailer should be on level ground before attempting to connect the coupler to the hitch of the towing vehicle. Consider connecting the trailer to the tow vehicle on a level road or driveway.
2. **Install wheel chocks** – To prevent the trailer from rolling backward when the jack is removed, install wheel chocks in pairs on either side of the trailer wheels. Apply chocks to both the front and rear of at least two trailer tires.

3. **Unlock coupler** – Verify that the coupler of the trailer is in the unlocked, **forward** position.



#### CONNECTING TRAILER TO TOW VEHICLE

4. **Back up tow vehicle** – Reverse the tow vehicle, placing the trailer ball directly below the trailer coupler. To do this, you may need to raise the coupler with the jack.
5. **Plug in 7-way cable** – Connect the 7-way plug into the respective port of the tow vehicle.
6. **Retract the jack** – Raise the jack, lowering the trailer coupler onto the trailer ball of the tow vehicle. Ensure that the coupler is in the unlocked forward position.



#### Warning

The jack should always be fully retracted to its maximum height before pulling the trailer. Neglecting to do this can result in damage to the jack, trailer, and tow vehicle and can cause serious injury.

7. **Apply appropriate tongue weight** - An indicator that your trailer tongue weight is appropriate is that the trailer is level when connected to the tow vehicle. Use a bubble level to validate this, ensuring that the trailer and tow vehicle are on level ground. If the trailer does not sit level, adjust the height of the gooseneck coupler.



#### Warning

##### Dangers of tongue weight underloading/overloading

There are inherent risks to both underloading and overloading the tongue of your trailer.

An overloaded tongue can reduce traction and steering ability of front tires of the towing vehicle.

An underloaded tongue has been shown to increase swaying/fishtailing of the trailer during transport, especially with increased speeds or heavy wind.

8. **Lock the coupler** – Rotate the coupler latch to align the locking pin and hole.. Thread the locking pin through the hole to ensure the latch is fully engaged.



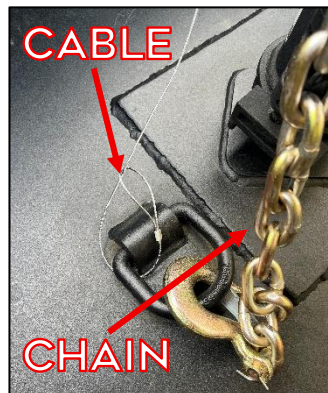
9. **Attach the safety chains** – Connect the safety chains and attach them from the trailer tongue to the connection points on the tow vehicle.



### Warning

#### Dangers of Twisting Safety Chains

Although twisting chains for trailer hookup may seem like an effective way to adjust their length, this has been proven to greatly reduce the strength of the chains. Instead, the pins that attach the chains to the hooks can be removed and inserted through a different link to change the length of chain without twisting or cutting the chain. Ensure that both chains are approximately the same length when adjusting their length.



10. **Attach the break-away cable** – Ensure that the break-away cable is attached to the tow vehicle frame and is engage/connected on the trailer. Verify that the break-away cable is not threaded through or around anything on the trailer tongue. The break-away cable should be a few inches shorter than the chains when they are pulled taught to ensure proper deployment of trailer brakes in case of emergency.
11. **Remove wheel chocks** – Remove wheel chocks from trailer wheels before inspecting the trailer.
12. **Test lights** – Check to ensure full functionality of running/marker lights, tail/brake lights, and turn signals.
13. **Test brakes** – Ensure brakes on tow vehicle and trailer are fully operational.
14. **Inspect tires** – Make sure tires of both the tow vehicle and trailer are properly inflated and that lug nuts are properly tightened.

15. **Inspect trailer bed** – Verify that there are no loose or frayed wires underneath the trailer. Address any safety concerns before transporting the trailer.
16. **Close and lock windows and doors** – Make sure all doors, windows, and any other items (marquee, merchandise window, hay pod) are shut and locked/latched. Locking doors are recommended to ensure that doors are completely closed and latched.



### Warning

**Neglecting to close and lock down all doors, windows, and other compartments could result in damage to the trailer and tow vehicle as well as cause bodily harm to pedestrians.**

## AFTER TRANSPORTING TRAILER

### BUMPER-PULL

#### PREPARING TRAILER FOR DISCONNECTION

1. **Park tow vehicle and trailer** – Park so that both the tow vehicle and trailer are on level ground.
2. **Install wheel chocks** – To prevent the trailer from rolling, install wheel chocks in pairs on either side of the trailer wheels.

#### DISCONNECTING TRAILER FROM TOW VEHICLE

3. **Unlock the coupler** – Remove the safety pin, then slide the coupler latch **toward** the ball until it disengages.
4. **Extend the jack** – Deploy the jack, raising the trailer coupler off the trailer ball of the tow vehicle. Ensure that the surface below the jack is level and that the ground supporting the jack is sufficient to support the trailer.
5. **Detach break-away cable** – Detach break-away cable from tow vehicle frame.
6. **Detach safety chains** – Detach safety chains from connection points on tow vehicle.
7. **Detach 7-way cable** – Detach 7-way cable from port on tow vehicle.

### GOOSENECK

#### PREPARING TRAILER FOR DISCONNECTION

1. **Park tow vehicle and trailer** – Park so that both the tow vehicle and trailer are on level ground.
2. **Install wheel chocks** – To prevent the trailer from rolling, install wheel chocks in pairs on either side of the trailer wheels.

#### DISCONNECTING TRAILER FROM TOW VEHICLE

3. **Unlock the coupler** – Remove the locking pin, then slide the coupler latch **forward** to disengage it.
4. **Lower the jack** – Deploy the jack, raising the trailer coupler off the trailer ball of the tow vehicle. Ensure that the surface below the jack is level and that the ground supporting the jack is sufficient to support the trailer.
5. **Detach break-away cable** – Detach break-away cable from tow vehicle frame.
6. **Detach safety chains** – Detach safety chains from connection points on tow vehicle.
7. **Detach 7-way cable** – Detach 7-way cable from port on tow vehicle.



## STORAGE

When your trailer will not be in use for an extended period of time, it is recommended that you complete the following procedures to preserve the life of your trailer and its components:

**Store indoors or cover trailer** – Park your trailer in a climate-controlled facility, if possible, or cover the trailer and trailer tires to prevent UV and/or water damage.

Choose 1 of the following configurations for the battery when storing your trailer:

- a) **Keep trailer plugged in (preferred)** – Trailers with on-board power storage utilize lead-acid batteries. By keeping your battery fully charged, you can help to maximize the life of your battery. Keep your trailer connected to shore power via its respective power cord and external port.
- b) **Disconnect battery** – If your trailer is equipped with a battery and you cannot provide it continuous power in storage, it is recommended that you switch the battery disconnect switch to the “OFF” position to prevent long-term battery drain. This is located in the battery compartment.

## TROUBLESHOOTING

### BATTERY

**My battery isn't holding a charge.**

The lead-acid battery installed in the trailer should last between 3 and 5 years with proper use and maintenance. If a battery is not properly used/maintained, its lifespan can decrease. Replace the battery as needed.

### TRAILER JACK

**Why is my trailer jack not working?**

Ensure that your 7-way cable is plugged into the tow vehicle. This powers the electric jack.

### POWER

**My 7-way cable isn't providing power.**

The prongs within the 7-way cable can become deformed or corroded over time, causing them to not create good electrical connection. With the power shut off, carefully bend the prong back together within each of the six outer ports. It is recommended that dielectric grease be applied to the contacts to reduce corrosion while maintaining good electrical connection.

**My lights are working, but my outlets and air conditioner are not.**

The interior lights run off the on-board battery, while many of the appliances (air conditioner, outlets, etc.) require shore power or generator power. Verify that the shore power is properly connected. If so, check the circuit breakers located in either the breaker box/power converter.

**My lights are not working, but my outlets are.**

Make sure that the battery disconnect is set to the “ON” position. This is often an issue when first taking the trailer out of storage. If the battery disconnect is properly set, inspect the fuse box or the fuses located in the power converter. Replace any blown fuses.

**My generator will not stay running.**

Ensure proper airflow to the generator. Open at least one compartment door and slide the generator out of the compartment if possible for sufficient venting.



## APPLIANCES

### **My air conditioner is not working, even though the thermostat is lit up.**

Ensure that shore power is connected and turned on. Appliances such as the air conditioner or the wall outlets rely on generator or shore power.

## MERCHANDISE WINDOW

### **The merchandise window does not fully close and is leaking.**

The latches for the merchandise window are adjustable by lengthening or shortening their plunger. Adjust the plunger length to tighten or loosen the latch. Regularly inspect the window seals and replace as needed. Over time, the seals can deform or flatten, resulting in leaks.

### **I can't close the merchandise trailer window by myself.**

You will need to disengage at least one of the slide locks. Refer to the instructions for closing the merchandise window.

## LIGHTING

### **My exterior DOT trailer lights are not working.**

Ensure the 7-way cable has good connection with the tow vehicle port. If the connection appears good, make sure that no fuses are blown within the towing vehicle.

## TIRES

### **My trailer tires are unequally worn. What's wrong with my setup?**

An underloaded or overloaded tongue can cause more wear on the front or back tires. If this is the case, adjust the tongue weight by adjusting the height of the trailer coupler. Check tires often to ensure they are properly inflated and have sufficient tread depth.

## HITCH SYSTEM

### **Should I be concerned that the coupler is loose?**

Slight play in the bumper-pull hitch system is expected. Even when the height adjustment bolts are tightened, expect the coupler to exhibit some looseness. This allows for movement during turns and can assist when connecting and disconnecting the trailer ball and the coupler. When setting the height for the gooseneck system, though, the coupler should be rigidly held in place by the set bolts. If necessary, tighten set bolts to secure gooseneck and ensure that the connection between the shaft and coupler is rigid.

## WIRE IDENTIFICATION CHART

GAUGE	COLOR	USAGE
6	Black	12V Power + Ground
10	Red	Electric Jack
12	Black	120V Power
12	White	120V Neutral
14	Yellow	Back Up Light
14	Brown	Right Turn + Ground
14	Red	Left Turn
14	Green	Running Lights
14	Blue	Brake + 12V Power

## MAINTENANCE

Multiple features and systems included with your trailer will need regular maintenance, repair, or replacement. This section outlines possible areas where maintenance is more regular or critical to proper performance of your trailer.

### BREAK-AWAY SYSTEM

The break-away system is an emergency system that activates if the trailer becomes disconnected from the tow vehicle at any point during transport. The break-away cable must be securely connected to the frame of the tow vehicle during transport. If separation occurs between the trailer and tow vehicle, the switch mounted to the trailer will close, engaging the brakes of your trailer.

The break-away system is equipped with its own rechargeable battery located beneath the front of the trailer. When the trailer is plugged into the tow vehicle via the 7-way cable, the break-away system battery will charge. This battery should be tested prior to every trip to ensure that it is well charged.

If the breakaway cable becomes damaged or frayed, ensure that it is replaced immediately.

### WHEELS

The wheels of both your tow vehicle and trailer are critical for safe transport of your trailer. Check wheels regularly to ensure they are properly fastened. Lug nuts are fasteners used to fix the wheel to the axle. Regularly inspect all tires to verify that all lug nuts are properly fastened. When changing a trailer tire, ensure that the lug nuts are tightened with a torque of 90-120 foot-pounds (ft-lb) in a star pattern.

### TIRES & BEARINGS

Trailer tires need regular inspection and maintenance similar to car tires. This includes verifying sufficient tread depth and inflation. The inflation pressure rating of your trailer tires should be located on the sidewall of the tire. Rotating trailer tires every 5000 miles or once a year is recommended to ensure even wear over time. Additionally, inspect and reapply properly rated grease to the bearings every 5000 miles or once a year.

### BRAKES

When servicing your trailer every 5000 miles, inspect brakes to ensure proper magnet engagement and reliable braking performance.

### ROOF & SEALS

On an annual basis, the roof and roof seals should be inspected and replaced as needed. First, inspect the seamless roof panel to validate that it has not sustained any visible damage or punctures. Next, ensure a good roof seal. Replace the roof seal when there are visible cracks or when leaking starts to occur. Similarly, inspect exterior trim and door seals annually and repair/replace seals as needed. Adjust door and window latches to improve seal if needed.

### LOCKS, LATCHES, & HINGES

Over time, mechanical parts can begin to jam or squeak. To reduce wear and eliminate jamming/squeaking, apply an appropriate lubricant to locks/keyholes, latches, and hinges as needed. Avoid oil-based lubricants, as they can attract dust and dirt over time.

### STABILIZER LEVELING JACKS

For trailers equipped with leveling jacks, these should be regularly and properly lubricated to reduce wear on the moving parts. Consider a non-oil based lubricant that will not attract dust and dirt over time.

### SOLAR PANELS

To ensure efficient battery charging, solar panels must remain clean and clear of debris. A mild soap and water may be used to clean the panels.



# WARRANTY INFORMATION

## WARRANTY REGISTRATION

To register/transfer your trailer's warranty:

1. Scan the QR code or visit <https://www.alumitechproducts.com/warranty>
2. Complete the warranty registration form.



---

## 5/3 YEAR TRANSFERABLE RECREATIONAL WARRANTY

From the original date of purchase, this Alumi Tech Products, Inc. warranty covers the structural components of the trailer, including the welded aluminum base frame and welded crossmembers, wall framing, and roof for a period of five (5) years for recreationally used trailers. Additionally, this Alumi Tech Products, Inc. product shall be free from manufacturing defects in both materials and fabrication provided or produced by Alumi Tech Products, Inc. for three (3) years for recreational-use trailers.

This warranty does not extend to components and/or accessories that have been manufactured by a third party, or OEM parts. These components—including but not limited to axles, wheels, tires, jacks, doors, latches, windows, hydraulics pumps, winches, couplers, air conditioners, refrigerators, generators—are independently warranted, where applicable, by their respective manufacturers.

Recreational trailer warranties are fully transferable to subsequent owners for the remaining duration of the original warranty period. To transfer coverage, new owners must complete a new trailer warranty registration within two weeks, or fourteen (14) days, of the change of ownership. It is encouraged that any prior owners direct the new owner to the warranty registration form as well as inform them of the status of the current warranty. The terms and conditions of the warranty remain in effect for all future owners within the original warranty period. Warranty transferability is not available for trailers used for commercial or industrial purposes.

This warranty remains valid only if repairs are performed by Alumi Tech Products, Inc. or a repair facility authorized by Alumi Tech Products, Inc. Authorization must be requested with sufficient advance notice and will be evaluated on a case-by-case basis. In the case of repairs being performed by another authorized repair facility, a written estimate must be shared with Alumi Tech Products, Inc. prior to the anticipated repairs being performed. This product warranty does not cover the transportation expenses incurred during the repair process. Additionally, the original owner and any subsequent owners may not seek compensation for any losses resulting from a defect in the purchased product. These losses include, but are not limited to, damage to personal property, commercial losses, loss of use of the trailer, and expenses incurred from renting replacement equipment due to the damaged trailer.

Alumi Tech Products, Inc. reserves the right to void this warranty if it determines that the product has been misused, abused, modified from its original form or function, neglected, or improperly loaded. The owner has ten (10) days to report any defects discovered after purchasing the product. The warranty registration form must be completed and submitted—either electronically or by mail—within thirty (30) days of the product's purchase date.



The screwless exterior of the trailer utilizes a high-adhesion 3M VHB tape to fasten seams which has a limited temperature rating. Exceeding the manufacturer's specified temperature may compromise the effectiveness of this fastening technique. Alumi Tech Products, Inc. reserves the right to repair seams using rivets or alternative fasteners during warranty repair.

---

## 2 YEAR COMMERCIAL WARRANTY\*

From the original date of purchase, this Alumi Tech Products, Inc. warranty covers the structural components of the trailer, including the welded aluminum base frame and welded crossmembers, wall framing, and roof for a period of two (2) years for commercial/industrial trailers. Additionally, this Alumi Tech Products, Inc. product shall be free from manufacturing defects in both materials and fabrication provided or produced by Alumi Tech Products, Inc. for two (2) years for commercial/industrial-use trailers.

This warranty does not extend to components and/or accessories that have been manufactured by a third party, or OEM parts. These components—including but not limited to axles, wheels, tires, jacks, doors, latches, windows, hydraulics pumps, winches, couplers, air conditioners, refrigerators, generators—are independently warranted, where applicable, by their respective manufacturers.

This warranty remains valid only if repairs are performed by Alumi Tech Products, Inc. or a repair facility authorized by Alumi Tech Products, Inc. Authorization must be requested with sufficient advance notice and will be evaluated on a case-by-case basis. In the case of repairs being performed by another authorized repair facility, a written estimate must be shared with Alumi Tech Products, Inc. prior to the anticipated repairs being performed. This product warranty does not cover the transportation expenses incurred during the repair process. Additionally, the original owner and any subsequent owners may not seek compensation for any losses resulting from a defect in the purchased product. These losses include, but are not limited to, damage to personal property, commercial losses, loss of use of the trailer, and expenses incurred from renting replacement equipment due to the damaged trailer.

Alumi Tech Products, Inc. reserves the right to void this warranty if it determines that the product has been misused, abused, modified from its original form or function, neglected, or improperly loaded. The owner has ten (10) days to report any defects discovered after purchasing the product. The warranty registration form must be completed and submitted—either electronically or by mail—within thirty (30) days of the product's purchase date.

The screwless exterior of the trailer utilizes a high-adhesion 3M VHB tape to fasten seams which has a limited temperature rating. Exceeding the manufacturer's specified temperature may compromise the effectiveness of this fastening technique. Alumi Tech Products, Inc. reserves the right to repair seams using rivets or alternative fasteners during warranty repair.

\*The warranty for trailers used commercially or industrially is non-transferable.